



# PRIMARY CARE COMPETENCY FRAMEWORK FOR GENERAL PRACTICE

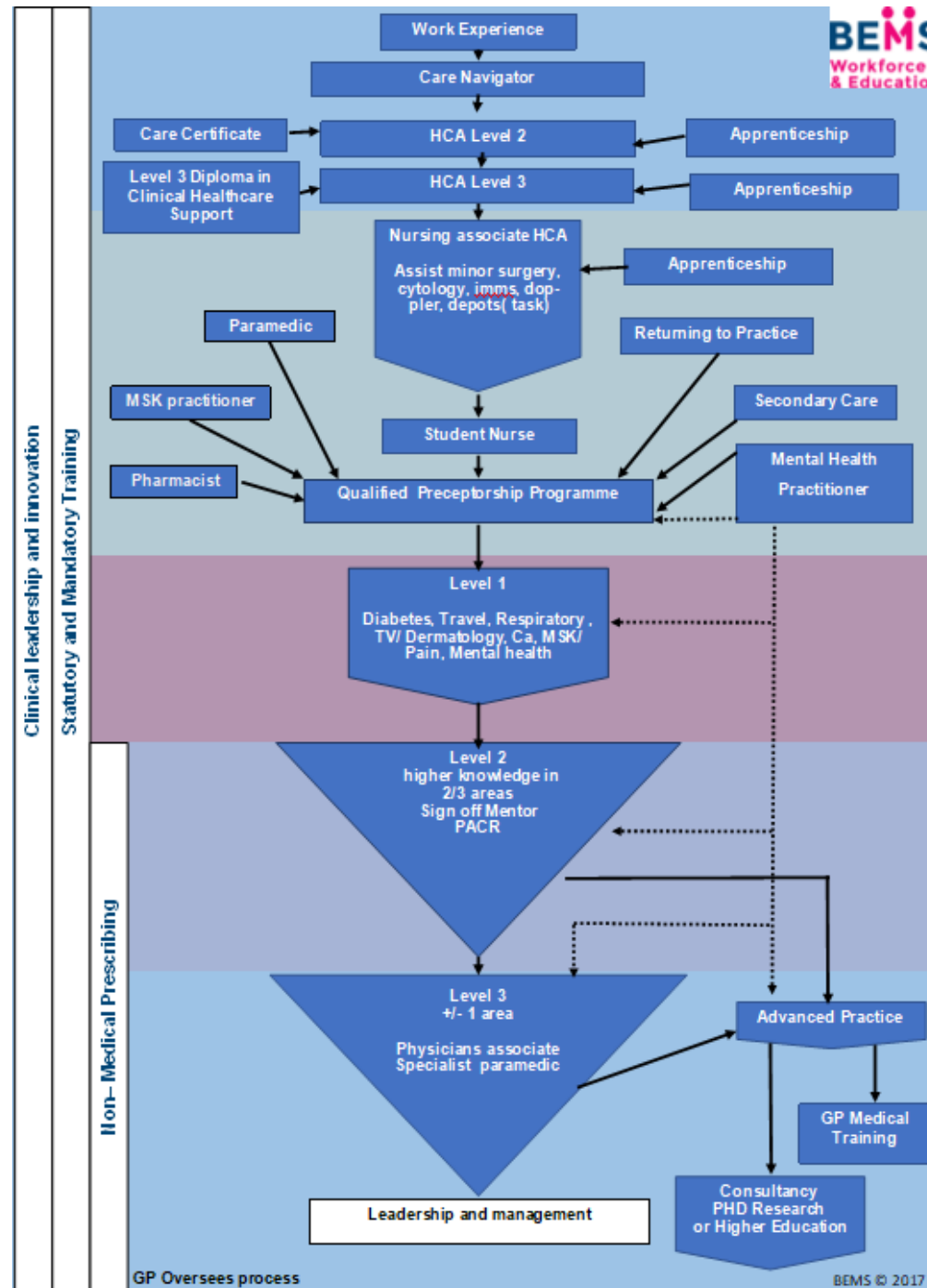
BANES SPECIFIC

The Training Hub has initiated a professional education framework for Primary Care to use as a tool when looking at the roles and skill mix required within their practice. The framework identifies a structure that assists Practices/PCNs to ensure efficient ways of working so that care is being delivered by the right person with the right skills within the right time frame.

A skills and learning matrix is attached with potential educational opportunities both locally and nationally. The skills matrix has been adapted from the LMC document (BEMS was a member of the steering group) mapping the career framework for staff in general practice. We are grateful for the input from Network for Health, Education for Health, University of the West of England, the RUH and BaNES CCG.

BANES Enhanced Medical Services  
[bems.adminoffice@nhs.net](mailto:bems.adminoffice@nhs.net)

# Professional Education Framework for Primary Care



# Costings

These costings are taken from the LMC skills and costing matrix and may not be representative of the location. These can be changed for each individual practice/PCN to ensure a more workable document.

	Nursing Apprentice	HCA/Phlebotomist	Nursing Associate HCA	GPN Level 1	GPN Level 2	GPN Level 3 NMP	Specialist paramedic	Nurse with Diploma & HCA	ANP NMP
Band Agenda for Change	Band 2	Band 3	Band 4	Band 5	Band 6	Bands 6-7	Band 6-7	Band 6-7	Band 8 (A-B)
<b>National average costings</b>									
Potential Annual Full Time Salary (mid band)	Depends on age/ level	£21,142	£24,157	£27,416	£37,890	£41,723	£34,782	£62,865	£55,450
Hourly rates @ 19/20 AFC Scales (mid band)		£10.84	£12.39	£14.06	£19.43	£21.40	£17.84	£32.24	£28.44
Rate per minute (round up/down)		£0.18	£0.21	£0.23	£0.32	£0.36	£0.30	£0.54	£0.47
Pay scale information	<a href="#"><u>NHS PAY</u></a>								
Education level	GCSE English / Maths / NVQ	GCSE English / Maths / Btech/ NVQ	5 GCSEs (A to C in Maths & English) or 2 A-Levels	RGN / PN Cert / BSc	RGN / PN Cert / BSc / Post Grad Diploma	As GPN + Post Grad Diploma + NMP	PG Cert/Diploma/ BSc		RGN/BSc / NPDIP / NMP / Masters/ PhD
Indemnity	<a href="#"><u>WessexLMCs</u></a>								

	Mental health practitioner NMP/	MSK Practitioner/	Pharmacist NMP	ANP NMP	Advanced paramedic	Consultant AP/NMP (PhD)	GP	GP & HCA
Band agenda for change	Band 8 (A-B)	Band 8 (A-B)	Band 8 (A-B)	Band 8 (A-B)	Band 8 (A-B)	Band 9		
National average costings								
Potential Annual Full Time Salary (mid band)	£55,450	£55,450	£55,450	£55,450	£55,450	£98,736	£93,000	£114,142
Hourly rates @ 19/20 AFC Scales (mid band)	£28.44	£28.44	£28.44	£28.44	£28.44	£50.63	£47.69	£58.53
Rate per minute	£0.47	£0.47	£0.47	£0.47	£0.47	£0.84	£0.79	£0.98
Pay scale information	<a href="#">NHS PAY</a>							
Education level		BSc/Post Grad Diploma	BSc/Post grad diploma/NMP	RGN/BSc / NPDIP / NMP / Masters/ PhD	BSc/Masters			
Indemnity	<a href="#">WessexLMCs</a>							

**New PCN Roles Eligible for 100% Reimbursement up to a maximum amount.**  
**Refer to the updated [GP Contract 2020/21](#)**

	Care Co-Ordinator	Social Prescriber Link Worker	Healthy & Well Being Coach	First Contact Physio	Clinical Pharmacist	Pharmacy Technician	Community Paramedic	Physicians Associate	Dietician	Occupational Therapist	Podiatrist / Chiropodist	Mental Health Practitioner NMP
Band agenda for change	Band 4	Up to Band 5	Band 4-5	Band 7-8A	Band 7- 8A	Band 5	Band 7	Bands 7	Band 7	Band 7	Band 7	Band 7-8
National average costings												
Potential Annual Full Time Salary (mid band)	£24,157	£27,416	£27,416	£44,503	£44,503	£27,416	£40,894	£40,894	£40,894	£40,894	£40,894	£44,503
Hourly rates @ 19/20 AFC Scales (mid band)	£12.39	£14.06	£14.06	£22.82	£22.82	£14.06	£20.97	£20.97	£21.40	£27.55	£27.55	£22.82
Rate per minute	£0.21	£0.23	£0.23	£0.38	£0.38	£0.23	£0.35	£0.35	£0.36	£0.46	£0.46	£0.38
Pay scale information	<a href="#">NHS PAY</a>											
Education level	PG Cert / Diploma / BSc	BSc/MSc	BSc / PG Dip and or MSc MH Nursing and or NMP	BSc / Post Grad Diploma/MSc and or NMP	BSc / Post Grad Diploma /MSc and or NMP	BTEC National Diploma in pharmaceutical science	BSc / Masters	BSc/Post grad diploma/ MSc	BSc/ MSc	Level 3 Cert		
Indemnity	<a href="#">WessexLMCs</a>											

**For further Skills and Costing information please [click here](#)**

## BANES Local Competencies & Education Providers

Education Level 2/3 – HCA					
	<u>Essential skills</u>	<u>Update requirements</u>	<u>Competencies</u>	<u>Resources</u>	<u>Education Provider</u>
<b>Care certificate</b>	15 components	As guidance changes	<a href="#">RCN – First steps for health care</a>	<a href="#">Care Certificate</a> <a href="#">Skills for Care – Care Certificate</a>	<a href="#">Network for Practices</a> BANES Training Hub provided <a href="#">HCA Forums</a> <a href="#">Skills for Care</a>
<b>Phlebotomy</b>	Infection control and standard precautions	Annual audit of failed rates/ complications	<a href="#">WHO phlebotomy</a> <a href="#">DOH- E Learning</a>	<a href="#">National Association of Phlebotomists</a>	<a href="#">Wessex LMC</a> <a href="#">Network for Practices</a>
<b>INR</b>	Evidence of training and competency.	Annual audit review	Self-competency/ assessment	<a href="#">DOH- E Learning</a> <a href="#">Gov.uk E-learning modules: Medicines</a> <a href="https://www.lumiradx.com/uk-en/care-solutions/training">https://www.lumiradx.com/uk-en/care-solutions/training</a>	Network for Practices <a href="https://www.lumiradx.com/uk-en/care-solutions/training">https://www.lumiradx.com/uk-en/care-solutions/training</a>
<b>Blood pressure measurement</b>			Self-assessment	<a href="#">British hypertensive society</a>  <a href="#">British heart foundation</a>	In house training
<b>Chaperoning</b>	Knowing what is required from a		Certification of training completed	<a href="#">Model Chaperone Framework</a>	<a href="#">Wessex LMC – Lunch and Learn</a>

	chaperone. Reporting concerns			<a href="#">Nigel's Surgery 15 - Chaperones</a>	
<b>Assisting in minor surgery</b>	Infection control and standard precautions.  Reporting concerns BLS/ANAPHA LAXYS	As guidance changes.  Good practice audit of infections	Self-assessment	<a href="#">Wessex LMC: Minor surgery and joint injections</a>  • Department of Health (2011) Revised guidance and competences for the provision of services using GPs with Special Interests (GPwSIs): Dermatology and skin surgery.	In house
<b>Spirometry</b>	Accredited ARTP approved	3 yearly	ARTP approved  Depending on level:  Foundation- Portfolio, practical assessment observed  Full- Portfolio, observation and written assignment  Interpretation- Portfolio and written assignment	<a href="#">Improving the quality of diagnostic spirometry in adults: The National Register of certified professionals and operators</a>  <a href="#">ARTP</a>  <a href="https://www.brit-thoracic.org.uk/media/70454/spirometry_e-guide_2013.pdf">https://www.brit-thoracic.org.uk/media/70454/spirometry_e-guide_2013.pdf</a>	<a href="#">Association for Respiratory Technology &amp; Physiology</a>
<b>Ear irrigation</b>	Ear care course	As guidance changes	10 seen  10 observed and signed off  Signed off written assessment	<a href="http://www.rotherhamhospital.nhs.uk/ear_care/">http://www.rotherhamhospital.nhs.uk/ear_care/</a>  <a href="#">Wessex LCM – Guide to ear care</a>	<a href="#">Wessex LMC</a>  <a href="#">Network for Practices</a>  In house mentor
<b>Influenza</b>	Introduction to immunisations and UK	Annual	RCN Immunisation competencies.	<a href="#">Gov.uk Immunisations</a>  <a href="#">Flu Vaccinations – Top Tips</a>	<a href="#">Wessex LMC</a>  <a href="#">Network for Practices</a>

	National Immunisation Policy		Signed off competency in house with mentor	<a href="#">Gov UK Flu – Immunisations, training and recommendations</a>  <a href="#">The Green Book – Chapter 19</a>  <a href="#">National Minimum Standards and Core Curriculum for Immunisation Training of Healthcare Support Workers</a>  <a href="#">Immunisation Knowledge and Skills Competence Assessment Tool</a>	BANES Training Hub provided <a href="#">Practice Nurse Forum</a>  <a href="#">E-Learning for Health</a>  <a href="https://www.gov.uk/government/collections/annual-flu-programme">https://www.gov.uk/government/collections/annual-flu-programme</a>
<b>B12</b>	Use of PSD BLS/ Anaphylaxis	Annual	Signed off competency in house after course completed with mentor	Observe and then administer 10 with mentor	<a href="#">Wessex LMC</a>  <a href="#">Network for Practices</a>
<b>Pneumococcal</b>	Introduction to immunisations and UK National Immunisation Policy	Annual	Signed off competency in house after course completed with mentor	<a href="#">Immunisation training of healthcare support workers: national minimum standards and core curriculum</a>  <a href="#">The Green Book -Chapter 25</a>  <a href="#">National Minimum Standards and Core Curriculum for Immunisation Training of Healthcare Support Workers</a>  <a href="#">Immunisation Knowledge and Skills Competence Assessment Tool</a>	<a href="#">Wessex LMC</a>  <a href="#">Network for Practices</a>



<b>Shingles</b>	Introduction to immunisations and UK National Immunisation Policy	Annual	Signed off competency in house after course completed with mentor	<a href="#">Gov.uk Immunisations</a> <a href="#">The Green Book – Chapter 28a</a> <a href="https://www.cdc.gov/vaccines/vpd/shingles/public/shingrix/index.html">https://www.cdc.gov/vaccines/vpd/shingles/public/shingrix/index.html</a> <a href="#">National Minimum Standards and Core Curriculum for Immunisation Training of Healthcare Support Workers</a> <a href="#">Immunisation Knowledge and Skills Competence Assessment Tool</a>	<a href="#">Wessex LMC</a> <a href="#">Network for Practices</a>
<b>Hepatitis A</b>	Introduction to immunisations and UK National Immunisation Policy	Annual	Signed off competency in house after course completed with mentor	<a href="#">Gov.uk Immunisations</a> <a href="#">The Green Book – Chapter 17</a> <a href="#">Immunisation Knowledge and Skills Competence Assessment Tool</a>	<a href="#">Network for Practices</a>
<b>ECG</b>		As guidance changes	Self-assessment	<a href="#">British Heart Foundation</a>	In house
<b>Health Checks</b>	Infection control and standard precautions Understanding of cardiovascular	Annual	<a href="#">NHS Health Check competence framework</a>	<a href="#">NHS Health Check</a>	Public health locally within <a href="#">HCA Forums</a>

	disease prevention				
<b>Wound dressings</b>	Infection Prevention and standard precautions. Safeguarding and knowing how to report concerns	As guidance changes	Competency based module	<a href="#">Lower Limb Recommendations</a>  <a href="https://www.nationalwoundcarestrategy.net/">https://www.nationalwoundcarestrategy.net/</a>	<a href="#">Wessex LMC</a>  <a href="#">Network for Practices</a>  <a href="#">AHSN Network</a>
<b>Suture/clip removal</b>	Infection prevention and control Wound care	At guidance changes	Competency based module	In house competency signed off with mentor	<a href="#">Wessex LMC</a>
<b>Diabetes</b>	Understanding of Diabetes.  Blood glucose and ketone testing	As guidance changes  Annual	<a href="#">TREND UK</a>	This is the recommendation of the RUH Diabetic team	<a href="#">Diabetes UK</a>  BGPert Diabetes Study Day  <a href="#">82 minutes online footcare training</a>  <a href="#">Network for Practices</a>
<b>Further general competencies &amp; education providers</b>	<ul style="list-style-type: none"> <li>• <a href="#">Skills for health</a></li> <li>• <a href="#">Nursing degree apprenticeship: factsheet</a></li> <li>• <a href="#">Skills for Health HCA</a></li> <li>• <a href="#">HEE Care Certificate</a></li> <li>• <a href="#">National Association of Phlebotomists</a></li> <li>• <a href="#">Wessex LMC</a></li> <li>• <a href="#">E-learning-modules-INR</a></li> <li>• <a href="#">INR star</a></li> <li>• <a href="#">NHS Health Check</a></li> <li>• <a href="#">BANES HCA Forums</a></li> <li>• <a href="#">BANES Practice Nurse Forum</a></li> <li>• <a href="#">E-learningforhealth</a></li> <li>• <a href="#">First Steps for HCA's</a></li> </ul>				

**Education Level 4 – Nurse Associate/HCA some of these may still be carried out by level 5**

	<b><u>Essential skills</u></b>	<b><u>Update requirements</u></b>	<b><u>Competencies</u></b>	<b><u>Resources</u></b>	<b><u>Education Provider</u></b>
<b>Dopplers</b>		As guidance changes	<a href="#">Doppler Clinical Competency</a>	<a href="#">Lower Limb Recommendations</a>	<a href="#">Network for Practices</a> <a href="#">Wessex LMC</a>
<b>Depot injections</b>	Contraception PSD/PGD	As guidance changes	In house competency signed off  <a href="#">RCN – Sexual Health Education Directory</a>	<a href="#">RCN – Sexual Health Education Directory</a>  <a href="#">FSRH</a>	<a href="#">Wessex LMC</a>  <a href="#">Network for Practices</a>  <a href="#">FSRH</a>
<b>Cytology</b>	2-day face to face cytology course	Annual audit of adequate  3 yearly update face to face or e-learning	Signed off by designated external mentor and in-house mentor as well. Set number of smears to be undertaken and % of adequate achieved. Will then obtain sample takers code	<a href="#">South West Cytology</a>  <a href="#">NHS Screening Programmes</a>	<a href="#">Wessex LMC</a>  <a href="#">NHS Digital: Open Exeter</a>  <a href="#">Gov UK Guidance Training</a>  <a href="#">Gov UK – Cervical Screening Education and Training</a>  <a href="#">E-Learning for Health</a>
<b>Childhood immunisations</b>	Introduction to immunisations and UK National Immunisation Policy 2 DAY COURSE	Annual	<a href="#">Immunisation Knowledge and Skill Competence Assessment Tool</a>	<a href="#">National Minimum Standards and Core Curriculum for Immunisation Training for Registered Healthcare Practitioners</a>	<a href="#">Wessex LMC</a>  <a href="#">Network for Practices</a>  <a href="#">E-Learning for Healthcare</a>

				<a href="#">The Greenbook</a>  <a href="#">Routine Immunisations Schedule</a>  <a href="#">Immunisation Knowledge and Skills Competence Assessment Tool</a>	<a href="#">Skills for Health</a>
<b>Travel immunisations following travel assessment</b>	Introduction to immunisations and UK National immunisation policy  Nathnac Yellow fever	Annual (12hours)  3 yearly	<a href="file:///C:/Users/BeckyWych/Downloads/010-573%20(6).pdf">file:///C:/Users/BeckyWych/Downloads/010-573%20(6).pdf</a>  <a href="#">NaTHNaC Training Portal</a>  Can be face to face or e-learning	<a href="#">The Green Book</a>  <a href="#">Travel Health Pro</a>  <a href="#">Immunisation Knowledge and Skills Competence Assessment Tool</a>	<a href="#">Wessex LMC</a>  <a href="#">Network for Practices</a>  <a href="#">NaTHNaC</a>  <a href="#">The Greenbook</a>
<b>Further general competencies &amp; Education Providers</b>	<ul style="list-style-type: none"> <li>• <a href="#">RCN/Indemnity</a></li> <li>• <a href="#">Wessex LMC</a></li> <li>• <a href="#">RCN become-a-nurse</a></li> <li>• <a href="#">HEE/Nursing Associate</a></li> <li>• <a href="#">RCN becoming a NA</a></li> <li>• <a href="#">NMC</a></li> </ul>				

**Education Level 5 – GPN 1-2**

	<u><b>Essential skills</b></u>	<u><b>Update requirements</b></u>	<u><b>Competencies</b></u>	<u><b>Resources</b></u>	<u><b>Education Provider</b></u>
<b>Diabetes</b>	Professional registration	As guidance change or individual needs identified	<a href="#">TREND UK</a>	This is the recommendation of the RUH Diabetic team  <a href="#">BSW Formulary (BCAP)</a>	<a href="#">Diabetes UK</a>  BGPert Diabetes Study Day  <a href="#">82 minutes online footcare training</a>  <a href="#">Network for Practices</a>
<b>CHD</b>	Member of professional body	Annual		<a href="#">Cardiovascular disease prevention pathway</a>  <a href="#">Cardiovascular disease NHS UK</a>  <a href="#">Cardiovascular Disease Prevention: Risk Detection and Management in Primary Care</a>	<a href="#">Wessex LMC</a>  <a href="#">UWE</a>
<b>Respiratory</b>	Member of professional body	As guidance changes	UK Inhaler group competencies	<a href="#">UK Inhaler Group: Inhaler standards and competency document</a>	In house training using competency tool  <a href="#">Wessex LCM</a>

<b>Sexual Health/ Contraception</b>	E-learning for health SRH curriculum. Member of Professional body	As guidance changes	E- learning for health developed by the FSRH.	<a href="#">Faculty of Sexual Health and Reproductive Healthcare</a>  <a href="#">RCN Sexual Health Education Directory</a>	<a href="#">e-SRH Curriculum Guide</a>  <a href="#">BANES Practice Nurse Forum</a>  <a href="#">BASHH Sexual Health Training</a>  <a href="#">FSRH Training</a>  <a href="#">E-Learning for Healthcare</a>  <a href="#">Skills for Health</a>
<b>Tissue viability</b>	Member of professional body	At guidance changes/ individual need	Compression therapy		<a href="#">Wessex LMC</a>  <a href="#">Network for Practices</a>
<b>Dermatology</b>			<a href="#">The Primary Care Dermatology Society</a>	<a href="#">British Dermatology Nursing Group</a>  <a href="#">E-Learning for Healthcare Dermatology</a>  <a href="#">The Primary Care Dermatology Society</a>	<a href="#">E-Learning for Healthcare Dermatology</a>  <a href="#">The Primary Care Dermatology Society</a>  <a href="#">BANES Practice Nurse Forum</a>
<b>Practice Supervisor / Practice Assessor</b>	Member of professional body  Knowledge of student competencies		See resources	<a href="#">Practice Supervisor Updated</a>  <a href="#">Practice Assessor Updated</a>	Online - <a href="#">Anglia Ruskin University</a>
<b>Further general</b>	<ul style="list-style-type: none"> <li>• <a href="#">NMC- indemnity</a></li> <li>• <a href="#">RCN/GPN</a></li> <li>• <a href="#">Skills for Health Nursing Associate Apprenticeship</a></li> </ul>				

<b>Competencies &amp; Education Providers</b>	<ul style="list-style-type: none"> <li>• <a href="#">Wessex LMC</a></li> <li>• <a href="#">Skills for Health Registered Nurse</a></li> <li>• <a href="#">NMC: The Code</a></li> <li>• <a href="#">Wessex Deanery GPN</a></li> <li>• <a href="#">QNI/GPN</a></li> <li>• <a href="#">E-learning for Health</a></li> </ul>
---	---

### Education Level 6 /7 – GPN Level 2-3

	<u>Essential skills</u>	<u>Update requirements</u>	<u>Competencies</u>	<u>Resources</u>	<u>Education Provider</u>
<b>Sign off mentor</b>	Teaching and assessing	Annual	FLAP	Recent changes in the system-	<a href="#">UWE</a>
<b>Diabetes</b>	Registered professional body. Diabetes care experience		<a href="#">TREND UK</a>  Insulin initiation course/ helping people continue on Insulin	This is the recommendation of the RUH Diabetic team  <a href="#">BSW Formulary (BCAP)</a>	<a href="#">UWE</a>  <a href="#">UWE: Care of the Adult with Diabetes</a>  <a href="#">Novo Nordisk</a>  <a href="#">Diabetes UK</a>  BGPRT Diabetes Study Day  <a href="#">82 minutes online footcare training</a>  <a href="#">Network for Practices</a>
<b>Respiratory</b>	Professional registered body member Experience of managing care of	Annual or if guidance changes	Diploma equivalent courses	<a href="#">NHS England Primary Care Prescribing Guidance Update</a>	<a href="#">UWE: Chronic and Acute Care Management of Chronic Obstructive Pulmonary Disease (COPD)</a>

	respiratory disease	3 yearly for Spirometry level			<a href="#">UWE: Asthma Care and Management</a>  <a href="#">FSRH</a>  <a href="#">UWE</a>
<b>CHD</b>	Professional body registration	As guidelines changes	Diploma in Cardiac Care  <a href="#">Heart Failure Competency Framework for Healthcare Professionals</a>	<a href="#">Cardiovascular disease prevention pathway</a>  <a href="#">Cardiovascular disease NHS UK</a>  <a href="#">Cardiovascular Disease Prevention: Risk Detection and Management in Primary Care</a>	<a href="#">UWE</a>
<b>Contraception and sexual health</b>	Member of Professional body Diploma in FSRH	5yrs	EKA in SRH  5X5hr small group assessed workshops  Clinical experience and assessment	<a href="#">Sexual Health &amp; Contraception</a>	<a href="#">E-learning for Health</a>  <a href="#">FSRH</a>  <a href="#">UWE</a>  <a href="#">UWE: Integrated Practice for Sexual and Reproductive Healthcare</a>  <a href="#">UWE: Promoting Sexual Health in Practice</a>  <a href="#">BANES Practice Nurse Forum</a>
<b>Fit notes</b>	Health Care Professional – member of professional body	As guidelines change	<a href="#">E-Learning for Health</a>	<a href="#">Fit Note Guidance</a>	<a href="#">E-learning for Health</a>



<b>Further general competencies &amp; Education Providers</b>	<ul style="list-style-type: none"> <li>• <a href="#">NMC: Adult (general) nursing</a></li> <li>• <a href="#">NHS Leadership Academy</a></li> <li>• <a href="#">Wessex LMC</a></li> <li>• <a href="#">NMC: The Code</a></li> <li>• <a href="#">HEE/South West</a></li> <li>• <a href="#">RCN/credentialing</a></li> <li>• <a href="#">Wessex LMC The Nursing Team</a></li> <li>• <a href="#">Wessex LMC/NMP</a></li> <li>• <a href="#">BANES Practice Nurse Forum</a></li> </ul>
---	---

Education Level 7/8 – GPN 3+					
	<u>Essential skills</u>	<u>Update requirements</u>	<u>Competencies</u>	<u>Resources</u>	<u>Education Provider</u>
<b>Leadership and management</b>					<a href="#">UWE: Leadership and Innovation</a>
<b>Being an Advanced Practitioner</b>	4 key elements <ul style="list-style-type: none"> <li>•Clinical Practice</li> <li>•Leadership and management</li> <li>•Research</li> <li>•Education</li> </ul>	As guidelines changes		<a href="#">HEE: Advanced Clinical Practice Portfolio Guidance Document</a>	<a href="#">UWE: - Paramedic Science ePortfolio Route</a>

<b>Contraception and sexual health</b>	Faculty registered nurse trainer	5yrs	Implant fitter IUD fitter	<a href="#">Sexual Health &amp; Contraception</a> <a href="#">E-learning for Health</a>	<a href="#">FSRH</a> <a href="#">The Redesigned FSRH Diploma (DFSRH) - Launching in spring 2020</a>
<b>Diabetes</b>	Professional body Diploma in Diabetes care.  Working within the RUH for 4d per year	Annual	MERIT- Meeting educational requirements improving treatment  <a href="#">TREND UK</a>  Insulin initiation course/ helping people continue on Insulin		<a href="#">Novo Nordisk</a>  <a href="#">UWE</a>  <a href="#">UWE: Care of the Adult with Diabetes</a>  <a href="#">Diabetes UK</a>  BGPRT Diabetes Study Day  <a href="#">82 minutes online footcare training</a>  <a href="#">Network for Practices</a>
<b>Fit notes</b>	Health Care Professional – member of professional body	As guidelines change	<a href="#">E-Learning for Health</a>	<a href="#">Fit Note Guidance</a>	<a href="#">E-learning for Health</a>  See BEMS website

<b>Further general competencies &amp; Education Providers</b>	<ul style="list-style-type: none"> <li>• <a href="#">NMC Mental Health Nursing</a></li> <li>• <a href="#">NMC: The Code</a></li> <li>• <a href="#">Health Careers Mental Health Nurse</a></li> <li>• <a href="#">Chartered Society of physiotherapy</a></li> <li>• <a href="#">Thames Valley-Leadership Academy</a></li> <li>• <a href="#">MSKs in primary-care</a></li> <li>• <a href="#">General Pharmaceutical Council</a></li> <li>• <a href="#">Wessex LMC/NMP</a></li> <li>• <a href="#">Wessex LMC</a></li> <li>• <a href="#">Royal Pharmaceutical Society</a></li> <li>• <a href="#">RCN: ALNP Credentialing</a></li> <li>• <a href="#">Royal College of Physicians: faculty-physician-associates</a></li> <li>• <a href="#">Paramedic - GP practice indemnity</a></li> <li>• <a href="#">Advanced Practice Programmes</a></li> <li>• <a href="#">NMC Approved NMP courses</a></li> <li>• <a href="#">University providers of PA degrees</a></li> <li>• <a href="#">General Pharmaceutical Council</a></li> </ul>
---	---

This working document is not representative of the training that occurs through the B&NES Training Hub Primary Care forum (Nurse/allied health professional section) and HCA forum. Links to these can be found here:

[BANES HCA Forums](#)

[BANES Practice Nurse Forum](#)

Please also see our training calendar for upcoming events and training:

[BEMS Website](#)